

USB/RS-232-9-pin adapter

With this adapter you can turn any USB-connector of a PC into a RS-232-COM-connection. It supports modern USB-2.0-connections, too. It permits the use of your serial devices, PC-interfaces etc. with any new PC. Just install the drivers and you will be able to use your pieces of equipment the way you are accustomed to.

Helpful hints for the correct use of the USB/RS-232-9-pin adapter:

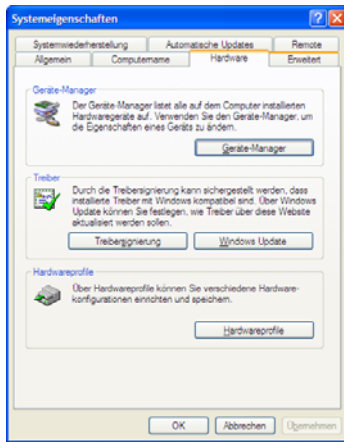
Inside the operating system this adapter creates a virtual "COM-Port" which for example can be COM 8, depending on the system in use.

Please note that older programs usually permit the use of just a few COM Ports, e. g. COM 1 – 4. There is a restriction to the way the COM Ports can be switched. This should be carried out by experienced users only! In some cases there may be incompatibility since some – especially older – programs do not work with USB-adapters. The only way to find out is giving it a try...

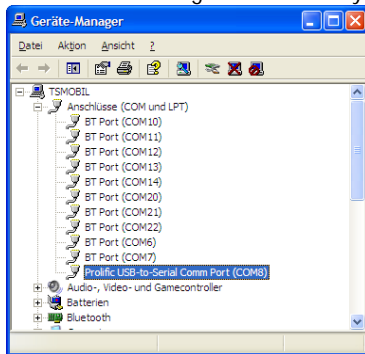
Important information: First install the following adapter plug from the CD: XCS-232-2303: pl2303 driver

Instruction for the installation of the drivers from the CD of the adapter:

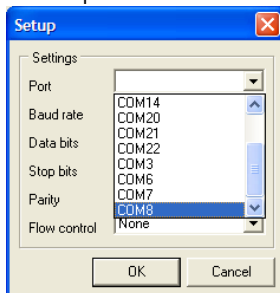
Select start / system control / system. In "system properties" select "hardware" and then the button "device manager"



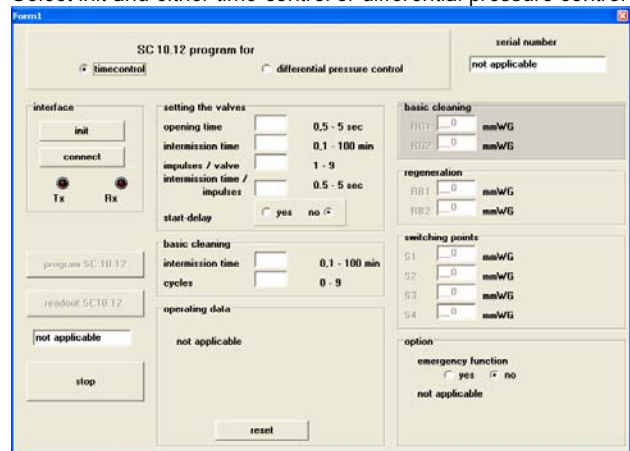
In the device manager menu select your USB-port



Start the program SC10.12 and select the button "init". In "Setup" select the Port COM 8



Select init and either time-control or differential pressure control



Select readout SC10.12

