

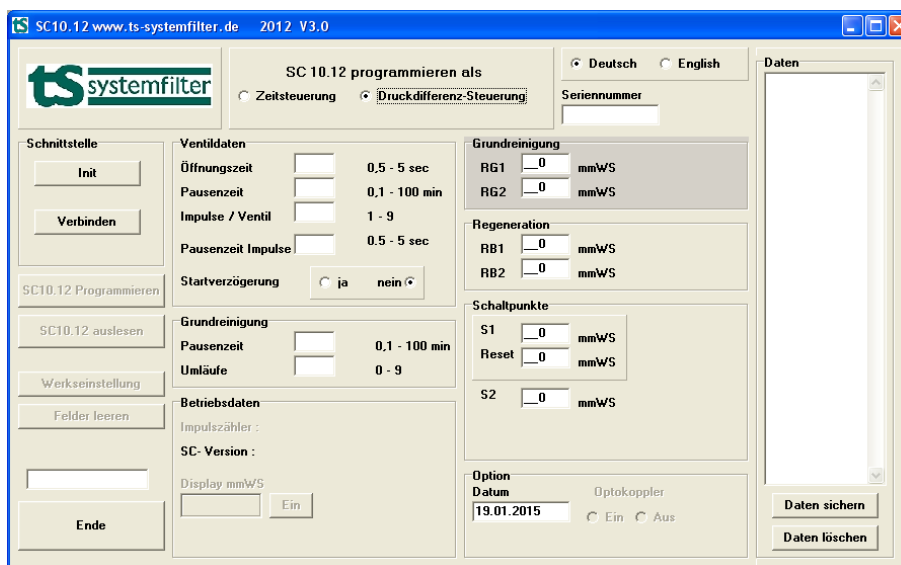
Since November 2018 our control unit has been available with two pins on one single device – both for 230 V AC and 24 V DC

Features:

- Both power supplies 230V 50/60 Hz and 24 V are possible at the same time; identification of the nameplate according to filter card; upon request delivery of both connectors
- Language selection in the software mask between German and English
- Enter any serial number
- Enter any date
- Control display for registration of data transfer
- pulse counter
- Display of the operating system of the microprocessor
- Reset to factory settings possible
- Resetting the pulse counter and operating hours to zero
- Switching from differential pressure control to time control is possible
- Use differential pressure control with time control, so that the pressure difference display and the alarm signal are available, but the regeneration takes place in time mode; easy reset to pressure difference is possible

Optional additions:

- Relay Module (RM-4)
- Remote Signal Module (MSM-4)
- Pressure Display Module (DAM-2)
- Circuit Pressure Control (NDM-2)



Process-control mask V3.0 - dated: 2012